



Similar to figure

Data sheet

Hydraulic data

Maximum operating pressure $P_N$	10 bar
Min. fluid temperature $T_{min}$	-10 °C
Max. fluid temperature $T_{max}$	110 °C

Materials

Pump housing	Grey cast iron
Impeller	PP-GF40
Shaft	Stainless steel
Bearing	Carbon, metal-impregnated

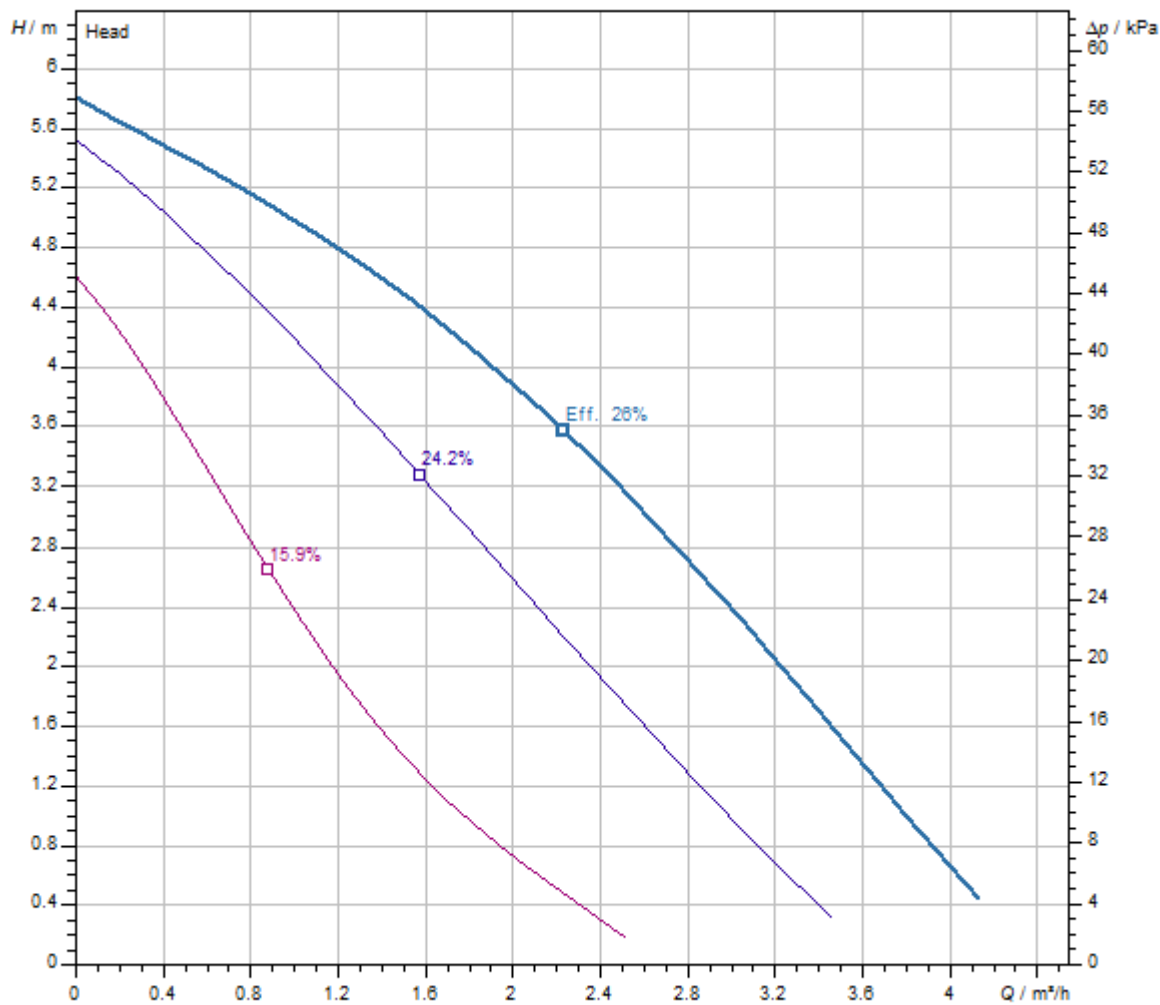
Motor data

Mains connection	1~230 V, 50 Hz
Rated current $I_N$	0.43 A
Max. speed $n_{max}$	1900 1/min
Power consumption $P_1(Q=max.)$ of selected impeller * number of pumps $P_1$	99 W
Emitted interference	EN 61000-6-3
Interference resistance	EN 61000-6-2
Protection class motor	IP44

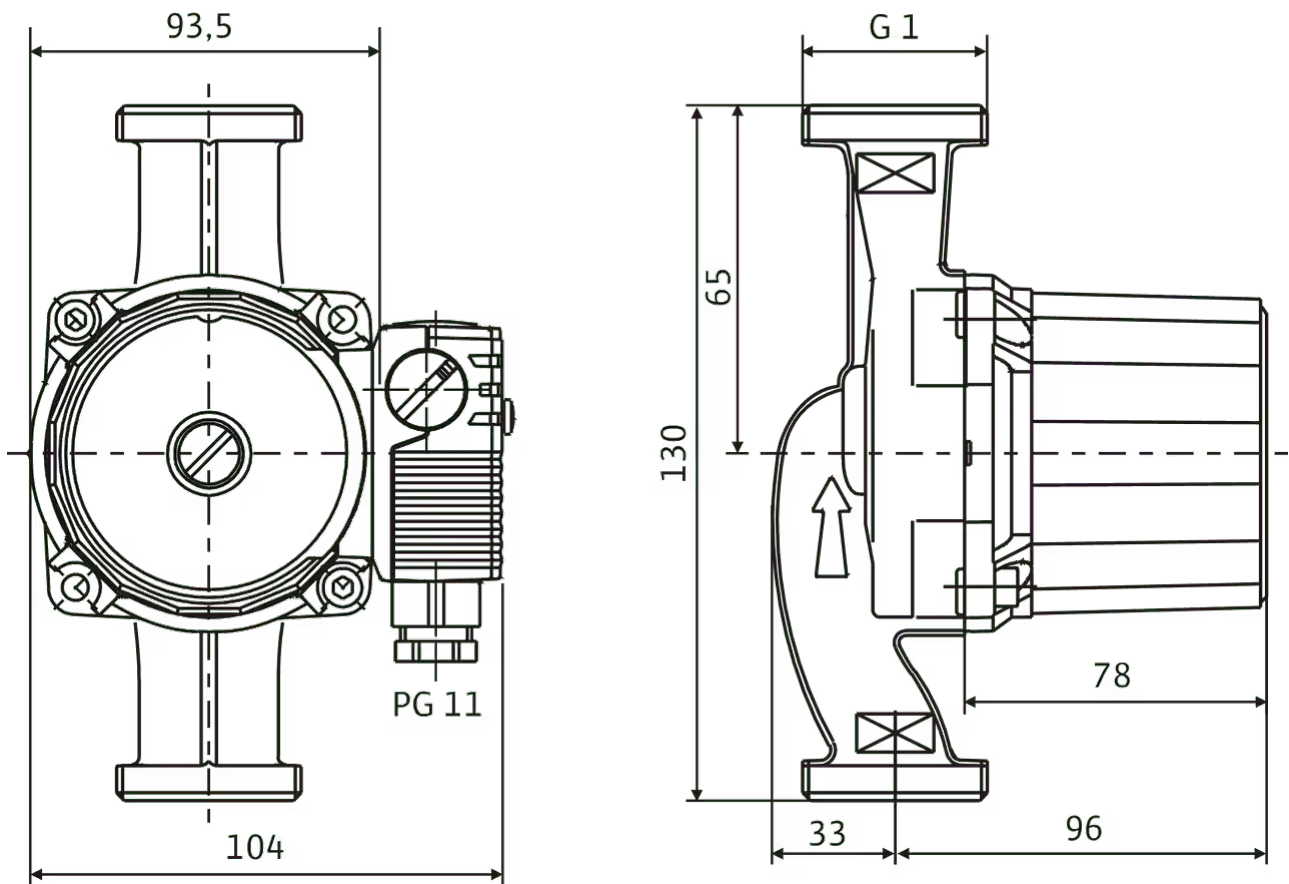
Installation dimensions

Pipe connection on the suction side $DNs$	G 1
Port-to-port length $L0$	130 mm

Pump curves



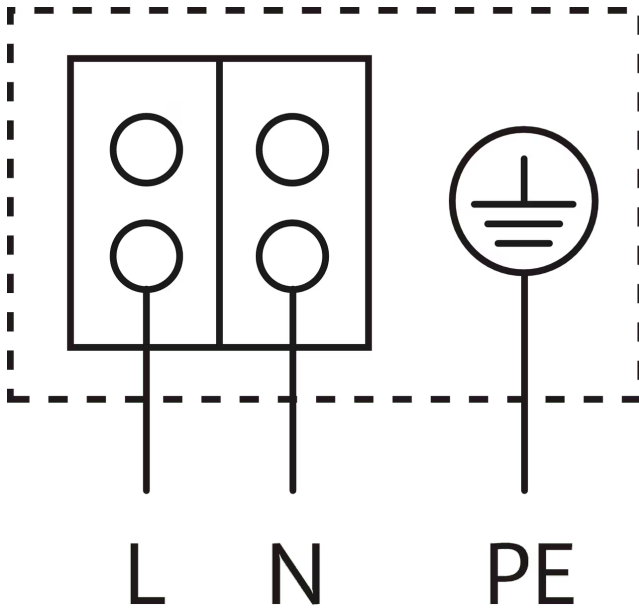
Fluid media	Water 100 %
Fluid temperature	20.00 °C
speed at duty point	2,900 1/min

**Dimensions and dimensions drawings****Star-RS**

Motor horizontal

Terminal box positions for 3, 6, 9 and 12 o'clock possible

On delivery, terminal box position is at 3 o'clock

**Wiring diagram****Star-E**

Blocking current-proof motor

**Single-phase motor** (EM) 2-pole - 1~230 V, 50 Hz

With built-in capacitor

## Tender text

Glandless circulation pump for pipe installation with manual 3-stage speed switch.

With blocking-current proof motor. Pump housing made from cast iron (bronze depending on type), impeller made from glass reinforced plastic, stainless steel shaft with metal-impregnated carbon plain bearings. Used as standard in cold-water systems up to -10°C.

Operational safety thanks to drilled-through shaft and filter unit in front of the cartridge

## Operating Data

Min. fluid temperature $T_{\min}$	-10 °C
Max. fluid temperature $T_{\max}$	110 °C
Min. ambient temperature $T_{\min}$	-10 °C
Max. ambient temperature $T_{\max}$	40 °C
Maximum operating pressure $PN$	10 bar

## Motor data

Emitted interference	EN 61000-6-3
Interference resistance	EN 61000-6-2
Mains connection	1~230 V, 50 Hz
Power consumption $P_{1 \max}$	99 W
Max. speed $n_{\max}$	1900 1/min
Rated current $I_N$	0.43 A
Protection class motor	IP44
Threaded cable connection	1 x PG11

## Materials

Pump housing	Grey cast iron
Impeller	PP-GF40
Shaft	Stainless steel
Bearing	Carbon, metal-impregnated

## Installation dimensions

Pipe connection on the suction side $DN_s$	G 1
Pipe connection on the discharge side $DN_d$	G 1
Port-to-port length $L_0$	130 mm

## Ordering information

Brand	Wilo
Product description	Star-RS 15/6
Net weight, approx. $m$	2.2 kg
Article number	<b>4063803</b> 