



Similar to figure

Data sheet

Hydraulic data

Maximum operating pressure P_N	10 bar
Min. fluid temperature T_{min}	-10 °C
Max. fluid temperature T_{max}	110 °C

Materials

Pump housing	Grey cast iron
Impeller	PP-GF40
Shaft	Stainless steel
Bearing	Carbon, metal-impregnated

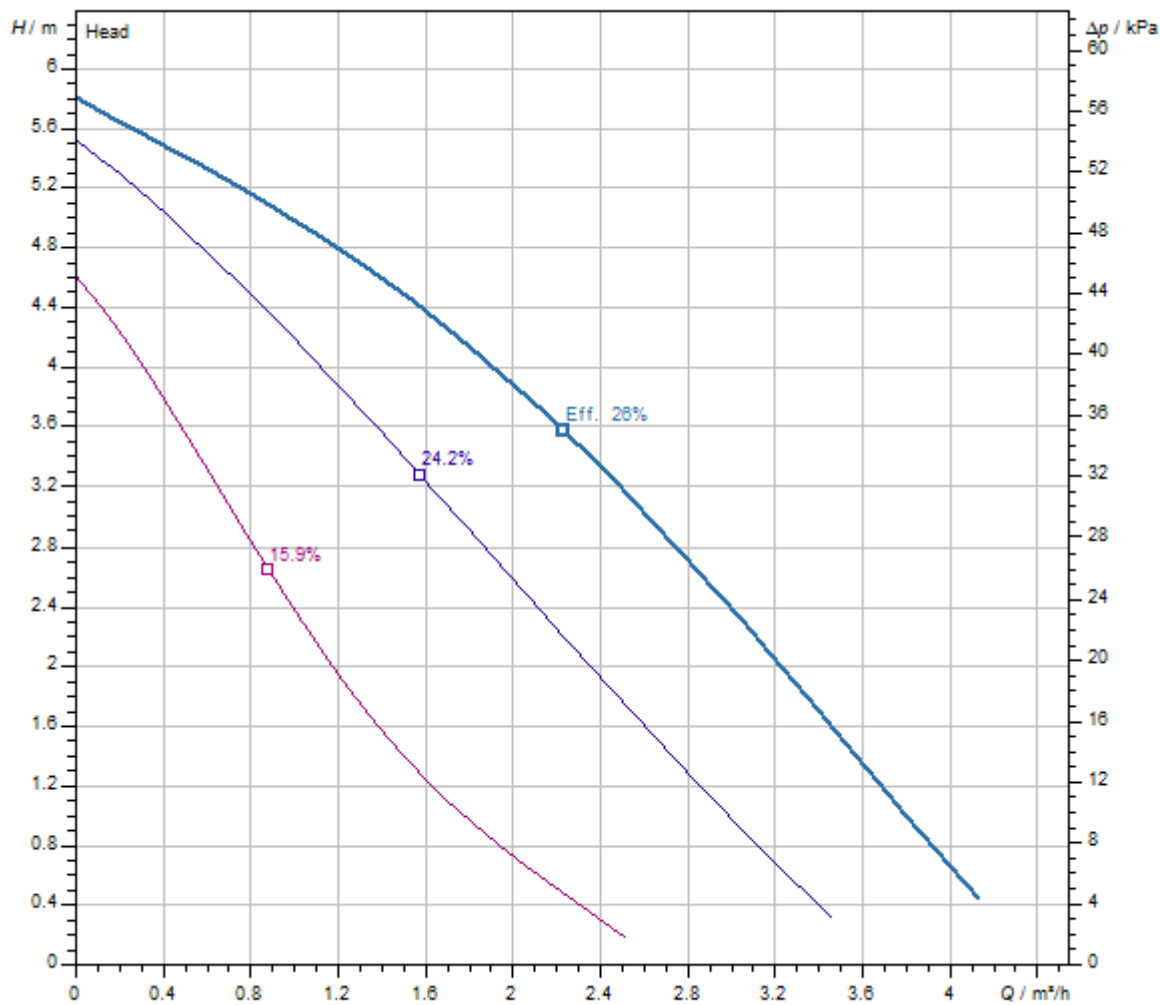
Motor data

Mains connection	1~230 V, 50 Hz
Rated current I_N	0.43 A
Max. speed n_{max}	1900 1/min
Power consumption $P_1(Q=max.)$ of selected impeller * number of pumps P_1	99 W
Emitted interference	EN 61000-6-3
Interference resistance	EN 61000-6-2
Protection class motor	IP44

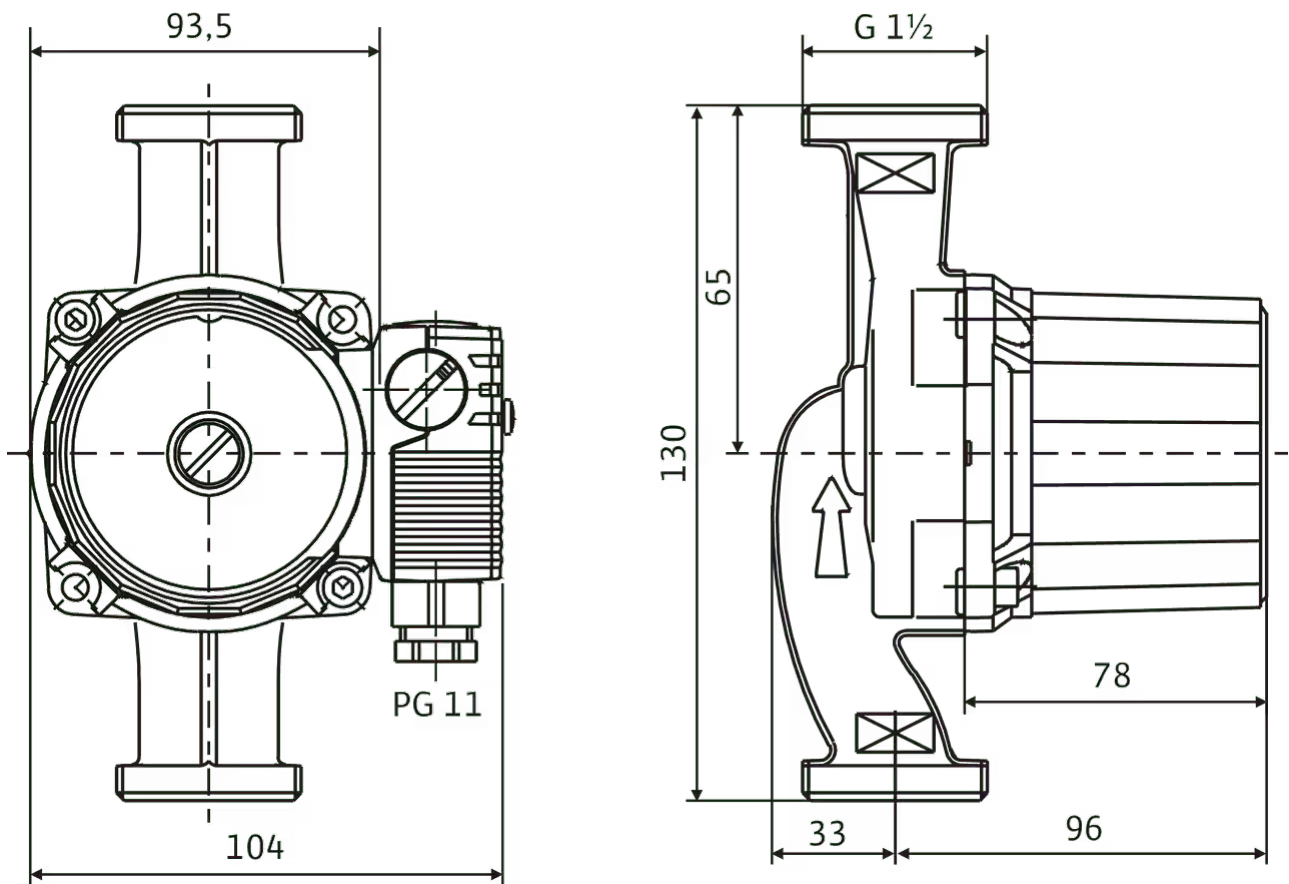
Installation dimensions

Pipe connection on the suction side DNs	G 1½
Port-to-port length $L0$	130 mm

Pump curves



Fluid media	Water 100 %
Fluid temperature	20.00 °C
speed at duty point	2,900 1/min

Dimensions and dimensions drawings**Star-RS**

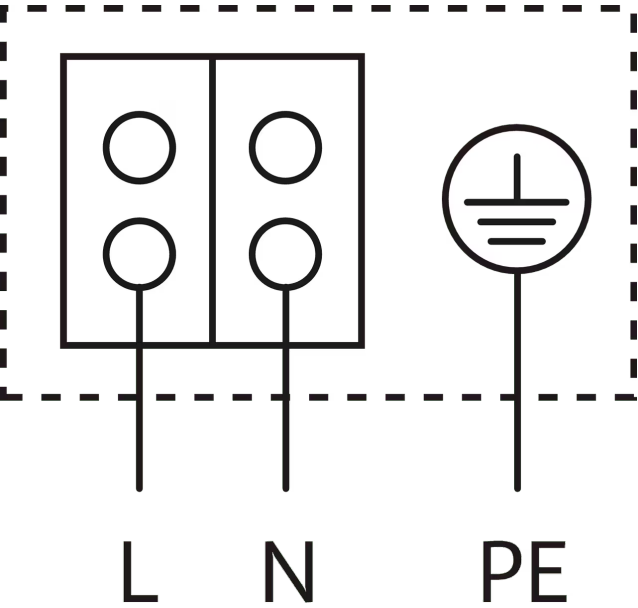
Motor horizontal

Terminal box positions for 3, 6, 9 and 12 o'clock possible

On delivery, terminal box position is at 3 o'clock

Wiring diagram


Star-E



Blocking current-proof motor
Single-phase motor (EM) 2-pole - 1~230 V, 50 Hz
With built-in capacitor

Ordering information

Product data

Brand	Wilo
Product description	Star-RS 25/6-130
Article number	4033782 
EAN number	4016322364269
Colour	Green
Minimum order quantity	1
Date of sales availability	2010-01-01

Packaging

Packaging type	Cardboard box
Packaging property	Sales packaging
Pieces per pallet	280
Number per layer	40

Dimension, weight

Length with packaging	138 mm
Length <i>L</i>	133 mm
Height with packaging	132 mm
Height <i>H</i>	123 mm
Width with packaging	148 mm
Width <i>W</i>	130 mm
Gross weight, approx. <i>m</i>	2.5 kg
Net weight, approx. <i>m</i>	2.4 kg

Tender text

Glandless circulation pump for pipe installation with manual 3-stage speed switch.

With blocking-current proof motor. Pump housing made from cast iron (bronze depending on type), impeller made from glass reinforced plastic, stainless steel shaft with metal-impregnated carbon plain bearings. Used as standard in cold-water systems up to -10°C.

Operational safety thanks to drilled-through shaft and filter unit in front of the cartridge

Operating Data

Min. fluid temperature T_{\min}	-10 °C
Max. fluid temperature T_{\max}	110 °C
Min. ambient temperature T_{\min}	-10 °C
Max. ambient temperature T_{\max}	40 °C
Maximum operating pressure P_N	10 bar

Motor data

Emitted interference	EN 61000-6-3
Interference resistance	EN 61000-6-2
Mains connection	1~230 V, 50 Hz
Power consumption $P_{1\max}$	99 W
Max. speed n_{\max}	1900 1/min
Rated current I_N	0.43 A
Protection class motor	IP44
Threaded cable connection	1 x PG11

Materials

Pump housing	Grey cast iron
Impeller	PP-GF40
Shaft	Stainless steel
Bearing	Carbon, metal-impregnated

Installation dimensions

Pipe connection on the suction side D_Ns	G 1½
Pipe connection on the discharge side D_Nd	G 1½
Port-to-port length L_0	130 mm

Ordering information

Brand	Wilo
Product description	Star-RS 25/6-130
Net weight, approx. m	2.4 kg
Article number	4033782 