



Similar to figure

Data sheet

Hydraulic data

Maximum operating pressure $P_N$	10 bar
Min. fluid temperature $T_{min}$	-10 °C
Max. fluid temperature $T_{max}$	110 °C

Materials

Pump housing	Grey cast iron
Impeller	PP-GF40
Shaft	Stainless steel
Bearing	Carbon, metal-impregnated

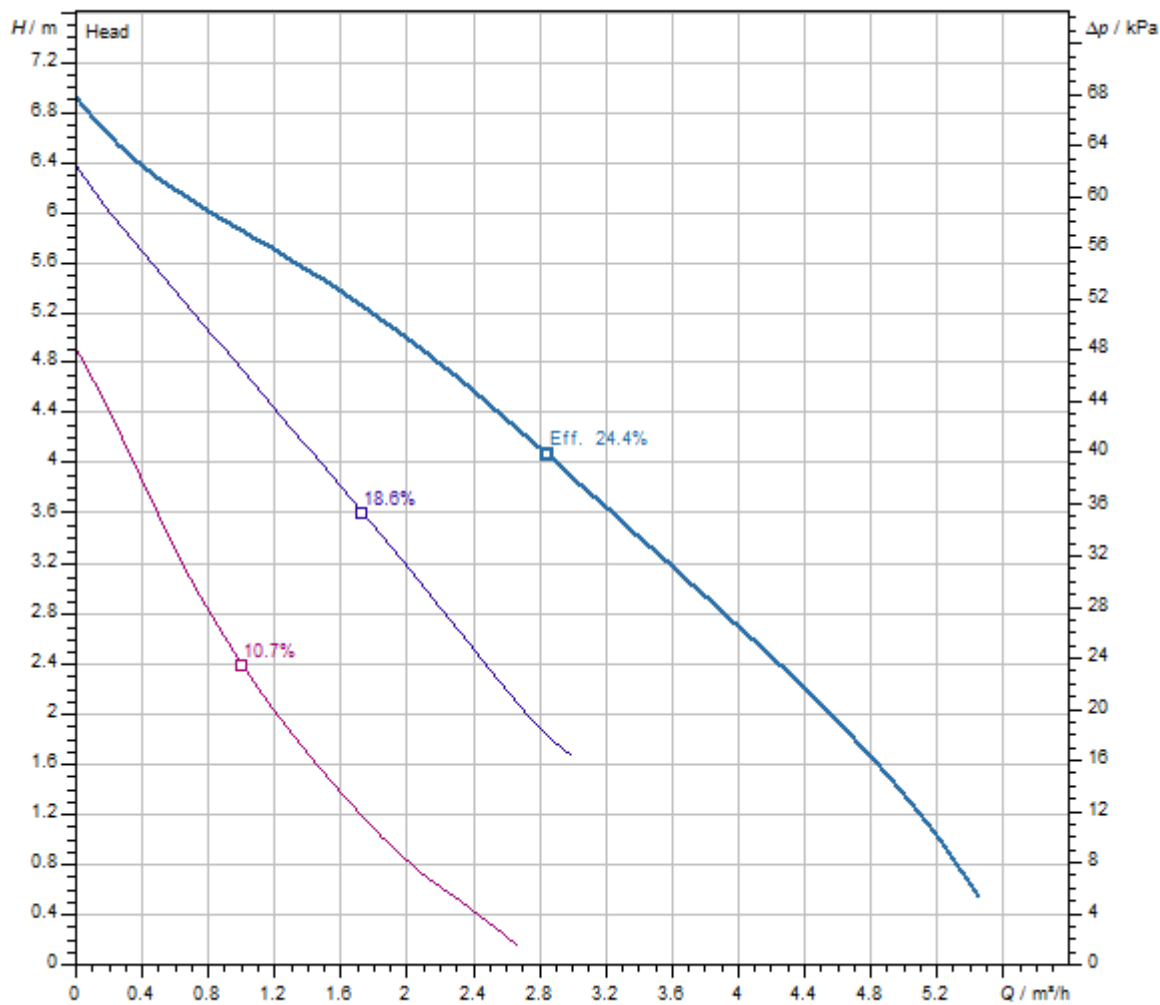
Motor data

Mains connection	1~230 V, 50 Hz
Rated current $I_N$	0.65 A
Max. speed $n_{max}$	2797 1/min
Power consumption P1(Q=max.) of selected impeller * number of pumps P1	168.5 W
Emitted interference	EN 61000-6-3
Interference resistance	EN 61000-6-2
Protection class motor	IP44

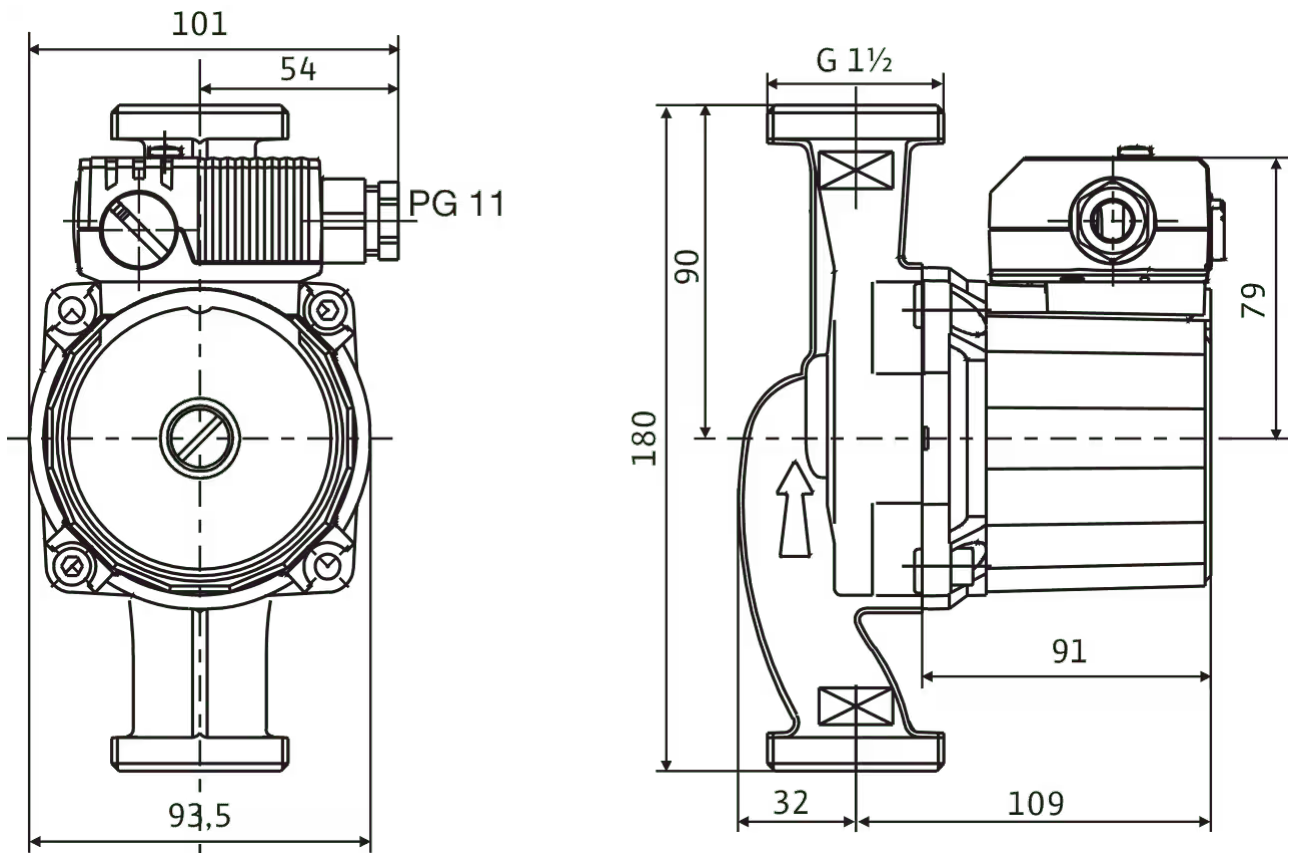
Installation dimensions

Pipe connection on the suction side $DN_s$	G 1½
Port-to-port length $L_0$	180 mm

Pump curves



Fluid media	Water 100 %
Fluid temperature	20.00 °C
speed at duty point	2,900 1/min

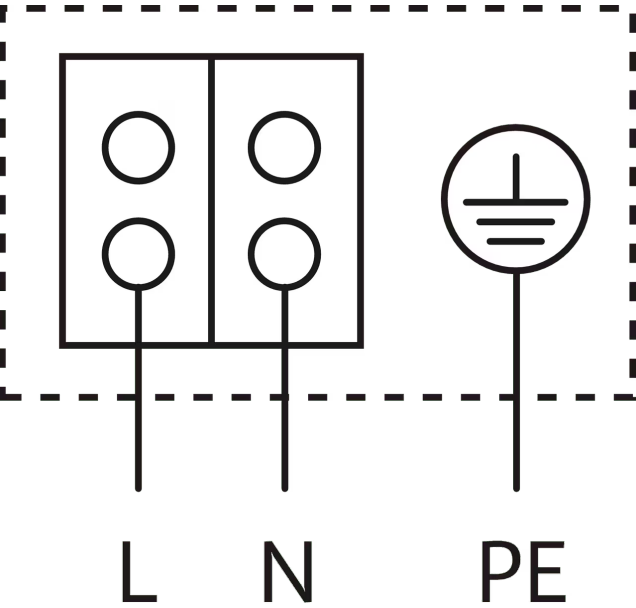
**Dimensions and dimensions drawings****Star-RS 25/7**

Motor horizontal

Terminal box positions for 3, 6, 9 and 12 o'clock possible

Wiring diagram


Star-E



Blocking current-proof motor  
Single-phase motor (EM) 2-pole - 1~230 V, 50 Hz  
With built-in capacitor

Ordering information

Product data

Brand	Wilo
Product description	Star-RS 25/7
Article number	4037310 
EAN number	4016322364344
Colour	Green
Minimum order quantity	1
Date of sales availability	2010-01-01

Packaging

Packaging type	Cardboard box
Packaging property	Sales packaging
Pieces per pallet	256
Number per layer	32

Dimension, weight

Length with packaging	152 mm
Length <i>L</i>	141 mm
Height with packaging	102 mm
Height <i>H</i>	101 mm
Width with packaging	192 mm
Width <i>W</i>	180 mm
Gross weight, approx. <i>m</i>	2.9 kg
Net weight, approx. <i>m</i>	2.8 kg

## Tender text

Glandless circulation pump for pipe installation with manual 3-stage speed switch.

With blocking-current proof motor. Pump housing made from cast iron (bronze depending on type), impeller made from glass reinforced plastic, stainless steel shaft with metal-impregnated carbon plain bearings. Used as standard in cold-water systems up to -10°C.

Operational safety thanks to drilled-through shaft and filter unit in front of the cartridge

## Operating Data

Min. fluid temperature $T_{\min}$	-10 °C
Max. fluid temperature $T_{\max}$	110 °C
Min. ambient temperature $T_{\min}$	-10 °C
Max. ambient temperature $T_{\max}$	40 °C
Maximum operating pressure $PN$	10 bar

## Motor data

Emitted interference	EN 61000-6-3
Interference resistance	EN 61000-6-2
Mains connection	1~230 V, 50 Hz
Power consumption $P_{1 \max}$	168.5 W
Max. speed $n_{\max}$	2797 1/min
Rated current $I_N$	0.65 A
Protection class motor	IP44
Threaded cable connection	1 x PG11

## Materials

Pump housing	Grey cast iron
Impeller	PP-GF40
Shaft	Stainless steel
Bearing	Carbon, metal-impregnated

## Installation dimensions

Pipe connection on the suction side $DN_s$	G 1½
Pipe connection on the discharge side $DN_d$	G 1½
Port-to-port length $L_0$	180 mm

## Ordering information

Brand	Wilo
Product description	Star-RS 25/7
Net weight, approx. $m$	2.8 kg
Article number	<b>4037310</b> 